

LUŠTICA BAY - A PLACE TO BELONG

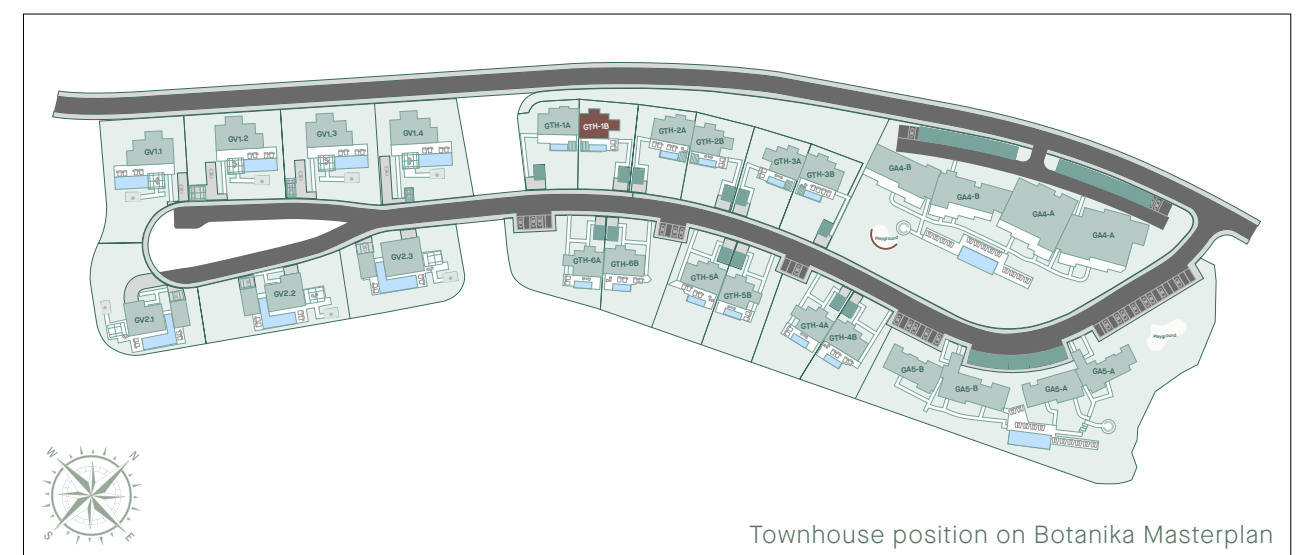
Luštica Bay embodies the serene Mediterranean lifestyle, blending tradition and heritage with innovation and contemporary amenities that showcase Montenegro's past and future. With thoughtful care and devotion, Orascom Development created this visionary destination, drawing on their unparalleled experience in creating integrated communities. This strong foundation ensures Luštica Bay's organic growth for decades to come.

The Peaks, the town's most sophisticated neighbourhood to date, offers architecturally stunning homes with understated sophistication in the interior design. Carefully carved into the rugged topography of the hill with minimal environmental impact, this residential collection boasts breathtaking views of the varied terrain and the Adriatic Sea. Adjacent to the upcoming 18-hole golf course (a first for Montenegro), The Peaks is a new community with an old soul, grounded in tradition and contemporary aesthetics.

Botanika

Botanika, the premier residential edition of The Peaks, elevates living to a new level. Each meticulously designed residence offers dramatic views over the Adriatic and the first holes of the golf course. Botanika features spectacular villas, three-bedroom townhouses with private pools, and one-to-three-bedroom apartments. These secluded private havens are created with sustainable architectural principles and natural materials such as stone and wood. The sophisticated neighbourhood provides seclusion and privacy, with the convenience of an upcoming town centre nearby for shopping, sports, and dining.

Life. Elevated.





CGI is indicative only

Botanika

TOWNHOUSE 1B

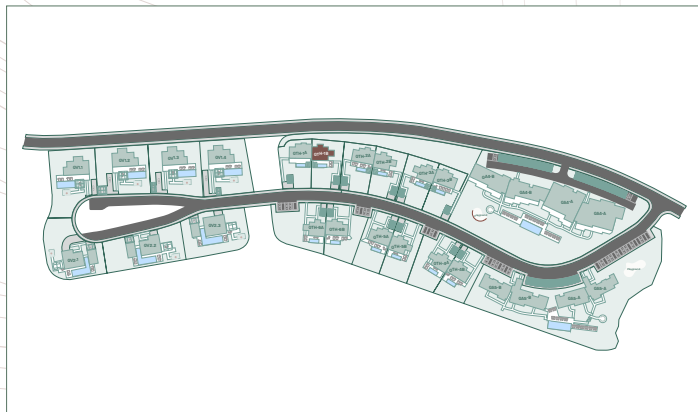
3 BEDROOM | 2.5 BATHROOM

Site Plan

TOTAL AREAS

Total Plot Area	750 m ²
Total Footprint	136.70 m ²

TOWNHOUSE POSITION



Botanika

TOWNHOUSE 1B

3 BEDROOM | 2.5 BATHROOM

GROUND FLOOR

Internal Area	74.91 m ²
Terrace	29.06 m ²
Swimming pool	20.00 m ²

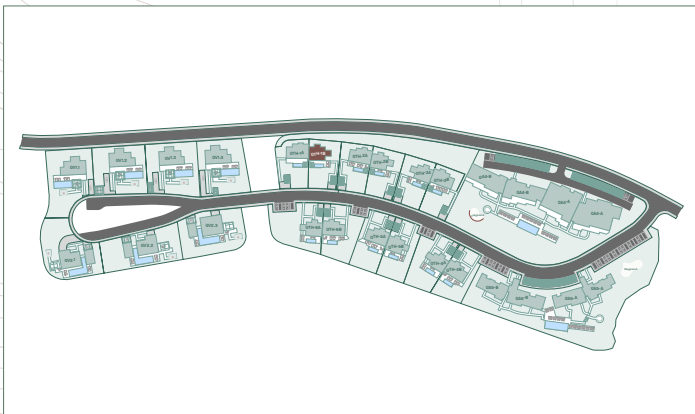
FIRST FLOOR

Internal Area	92.85 m ²
Terrace	20.44 m ²

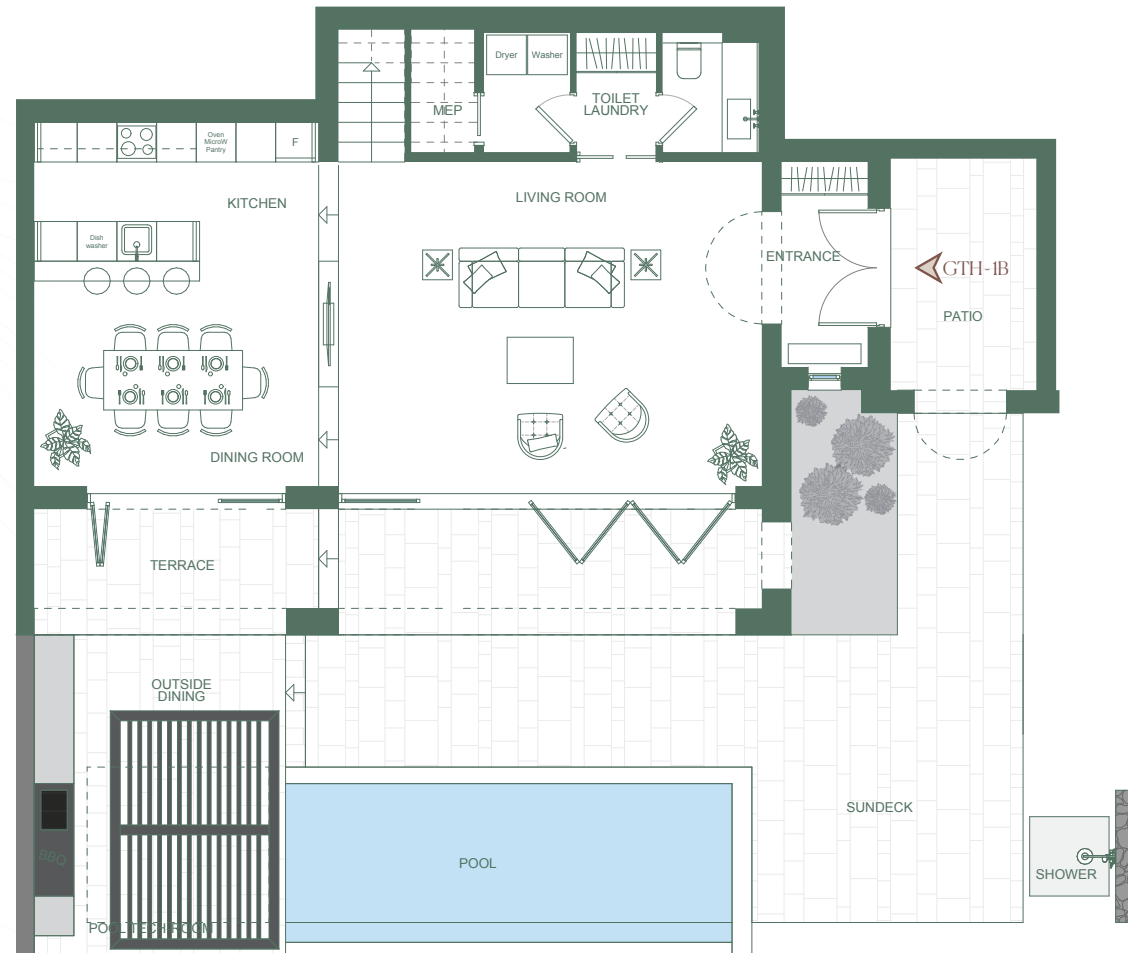
TOTAL AREAS

Total Internal	167.76 m ²
Total Terrace	49.50 m ²
TOTAL	217.26 m²

TOWNHOUSE POSITION



Ground Floor



First Floor

